

بِسْمِ اللّٰهِ الرَّحْمٰنِ الرَّحِیْمِ



ಕರ್ನಾಟಕ ಸರ್ಕಾರ

ಕರ್ನಾಟಕ ಸರ್ಕಾರದ ಅಧೀನದಲ್ಲಿರುವ ಸರ್ಕಾರಿ ಸಂಸ್ಥೆಗಳಿಗೆ ಸೇವೆಗಳನ್ನು ಒದಗಿಸುವ
ಸಂಸ್ಥೆಗಳಿಗೆ ಸೇವೆಗಳನ್ನು ಒದಗಿಸುವ

Development of a Council Workshop

PC-266/2026/W-13

ಕರ್ನಾಟಕ ಸರ್ಕಾರ:

(IUL)266-PR/266/2026/65

ಸರ್ಕಾರಿ ಸಂಸ್ಥೆ:

09 ನವೆಂಬರ್ 2026 ರಿಂದ 16 ನವೆಂಬರ್ 2026 ರವರೆಗೆ

2 ವಾರಗಳಿಗಾಗಿ

16 ನವೆಂಬರ್ 2026 ರಿಂದ 16 ನವೆಂಬರ್ 2026 ರವರೆಗೆ

ಕರ್ನಾಟಕ ಸರ್ಕಾರದ ಅಧೀನದಲ್ಲಿರುವ ಸರ್ಕಾರಿ ಸಂಸ್ಥೆಗಳಿಗೆ ಸೇವೆಗಳನ್ನು
ಒದಗಿಸುವ ಸಂಸ್ಥೆಗಳಿಗೆ ಸೇವೆಗಳನ್ನು ಒದಗಿಸುವ

ބަންދު ސަފުޔު 5
(ބަންދު ސަފުޔު ބަނޑު)

Form of Bid Security (Bank Guarantee)

WHEREAS,[name of Bidder] (hereinafter called “the Bidder”) [company registration number] has submitted his Bid for the Project no.....issued by the Secretariat of Kulhudhuffushi City Council onfor construction of [name of Contract] (hereinafter called “the Bid”) under Invitation of bidders No. [Announcement Number]

KNOW ALL PEOPLE by these presents that We [name of Bank] of [name of country] having our registered office at (hereinafter called “the Bank”) are bound unto[name of Purchaser] (hereinafter called “the Purchaser”) in the sum of *..... for which payment well and truly to be made to the said Purchaser, the Bank binds itself, its successors, and assigns by these presents.

SEALED with the Common Seal of the said Bank thisday of20.....

THE CONDITIONS of this obligation are:

- (1) If, after Bid opening, the Bidder withdraws his Bid during the period of Bid validity specified in the Form of Bid;
- or
- (2) If the Bidder having been notified of the acceptance of his Bid by the Purchaser during the period of Bid validity:
 - (a) fails or refuses to execute the Form of Agreement in accordance with the Instructions to Bidders, if required; or
 - (b) fails or refuses to furnish the Performance Security, in accordance with the Instruction to Bidders; or
 - (c) does not accept the correction of the Bid Price pursuant to Clause 27,

* The Bidder should insert the amount of the Guarantee in words and figures denominated in Maldivian Rufiyaa. This figure should be the same as shown in Clause 28.1 of the Instructions to Bidders.

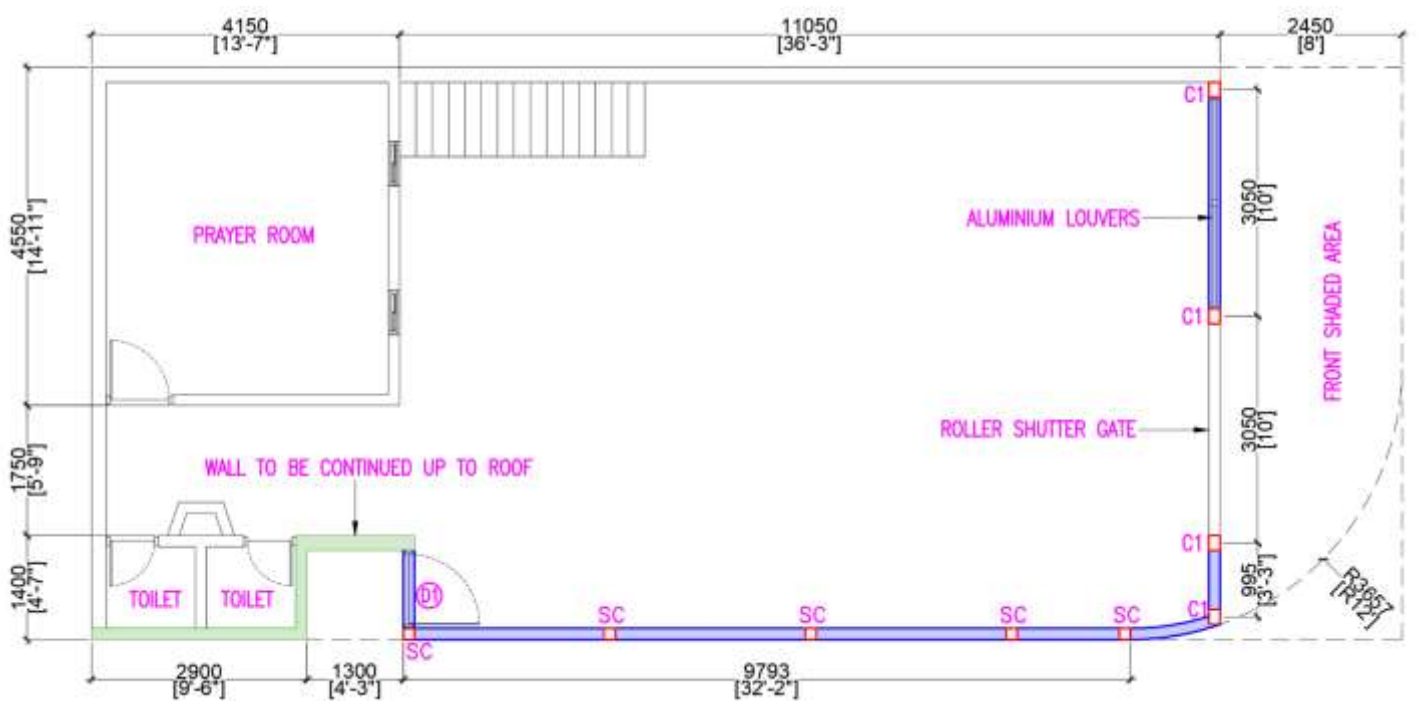
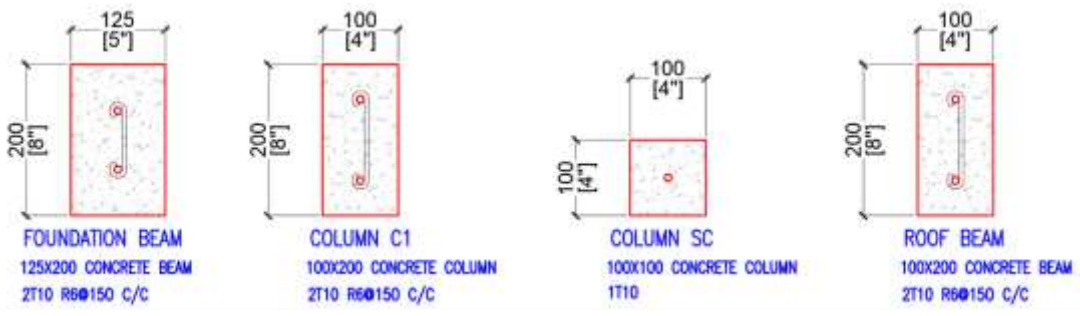
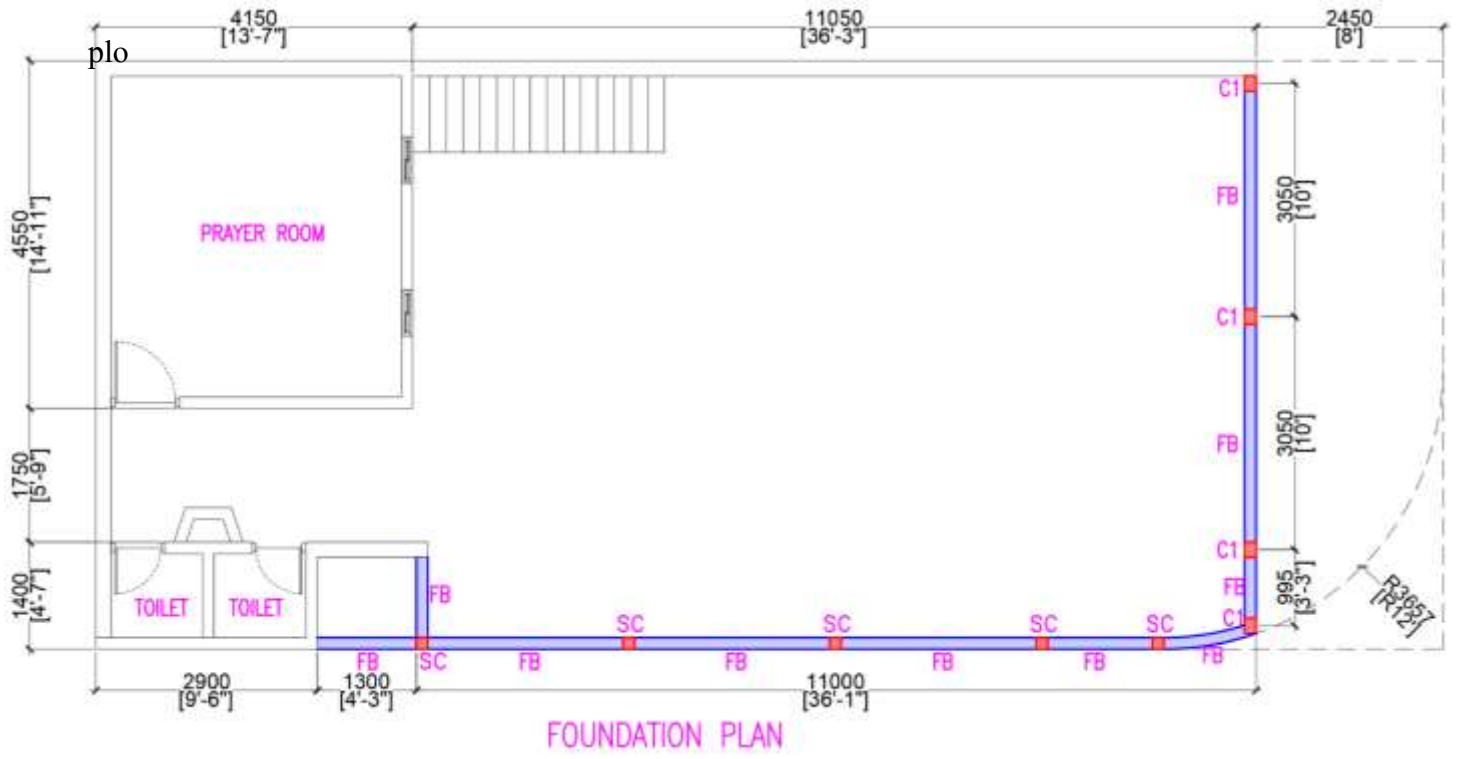
we undertake to pay to the Purchaser up to the above amount upon receipt of his first written demand, without the Purchaser’s having to substantiate his demand, provided that in his demand the Purchaser will note that the amount claimed by him is due to him owing to the occurrence of one or any of the three conditions, specifying the occurred condition or conditions.

This Guarantee will remain in force up to and including the date days after the deadline for submission of bids as such deadline is stated in the Instructions to Bidders or as it may be extended by the Purchaser, notice of which extension(s) to the Bank is hereby waived. Any demand in respect of this Guarantee should reach the Bank not later than the above date.

DATE..... SIGNATURE OF THE BANK

WITNESS SEAL

[signature, name, and address]

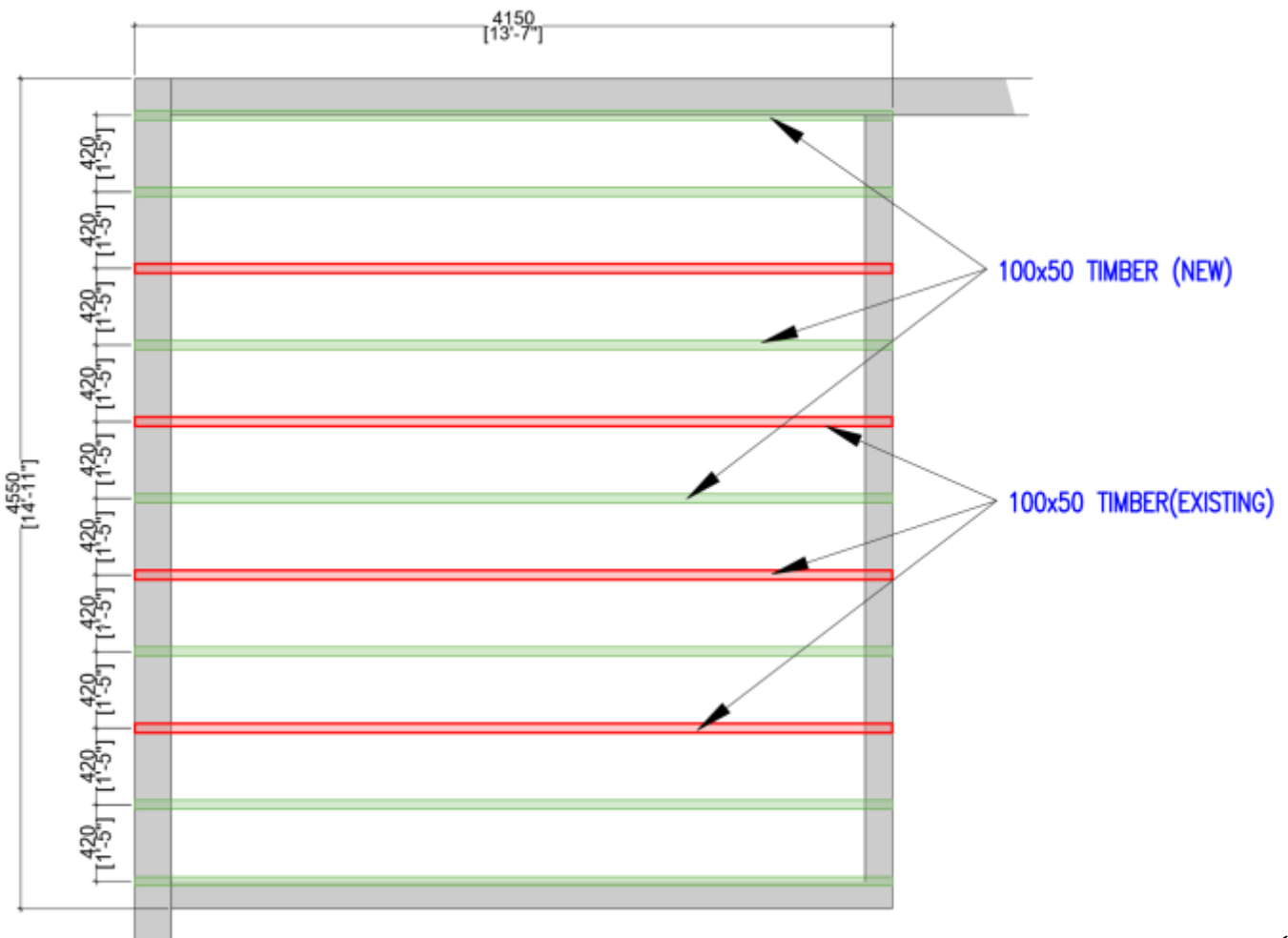


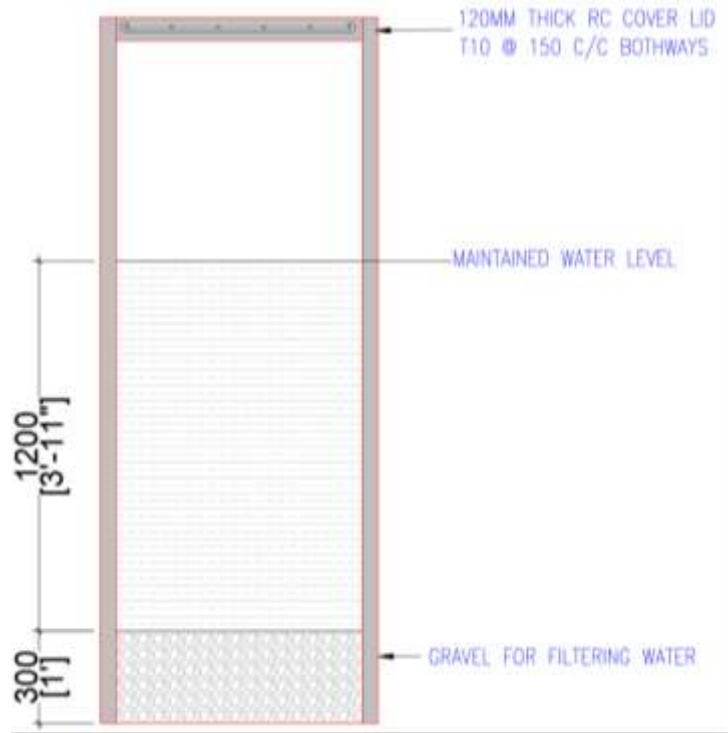
7. ބަނޑު ލިބިދޭ ގޮތުން:

- 7.1 ގަޑިއިތުރު ބަނޑު ލިބިދޭ ގޮތުން ބަނޑު ލިބިދޭ ގޮތުން.
- 7.2 ބަނޑު ލިބިދޭ ގޮތުން ބަނޑު ލިބިދޭ ގޮތުން ބަނޑު ލިބިދޭ ގޮތުން ބަނޑު ލިބިދޭ ގޮތުން.
- 7.3 ބަނޑު ލިބިދޭ ގޮތުން ބަނޑު ލިބިދޭ ގޮތުން 2.5 ބަނޑު ލިބިދޭ ގޮތުން.
- 7.4 ބަނޑު ލިބިދޭ ގޮތުން ބަނޑު ލިބިދޭ ގޮތުން ބަނޑު ލިބިދޭ ގޮތުން ބަނޑު ލިބިދޭ ގޮތުން.
- 7.5 ބަނޑު ލިބިދޭ ގޮތުން ބަނޑު ލިބިދޭ ގޮތުން ބަނޑު ލިބިދޭ ގޮތުން ބަނޑު ލިބިދޭ ގޮތުން.
- 7.6 ބަނޑު ލިބިދޭ ގޮތުން ބަނޑު ލިބިދޭ ގޮތުން ބަނޑު ލިބިދޭ ގޮތުން ބަނޑު ލިބިދޭ ގޮތުން.
- 7.7 ބަނޑު ލިބިދޭ ގޮތުން ބަނޑު ލިބިދޭ ގޮތުން ބަނޑު ލިބިދޭ ގޮތުން ބަނޑު ލިބިދޭ ގޮތުން.

8. ބަނޑު ލިބިދޭ ގޮތުން:

- 8.1 ބަނޑު ލިބިދޭ ގޮތުން ބަނޑު ލިބިދޭ ގޮތުން ބަނޑު ލިބިދޭ ގޮތުން ބަނޑު ލިބިދޭ ގޮތުން.
- 8.2 ބަނޑު ލިބިދޭ ގޮތުން ބަނޑު ލިބިދޭ ގޮތުން 50x100 ބަނޑު ލިބިދޭ ގޮތުން ބަނޑު ލިބިދޭ ގޮތުން.
- 8.3 ބަނޑު ލިބިދޭ ގޮތުން ބަނޑު ލިބިދޭ ގޮތުން ބަނޑު ލިބިދޭ ގޮތުން ބަނޑު ލިބިދޭ ގޮތުން.
- 8.4 ބަނޑު ލިބިދޭ ގޮތުން ބަނޑު ލިބިދޭ ގޮތުން ބަނޑު ލިބިދޭ ގޮތުން 4 ބަނޑު ލިބިދޭ ގޮތުން ބަނޑު ލިބިދޭ ގޮތުން.
- 8.5 ބަނޑު ލިބިދޭ ގޮތުން ބަނޑު ލިބިދޭ ގޮތުން 420 (ބަނޑު ލިބިދޭ ގޮތުން) ބަނޑު ލިބިދޭ ގޮތުން ބަނޑު ލިބިދޭ ގޮތުން.
- 8.6 ބަނޑު ލިބިދޭ ގޮތުން ބަނޑު ލިބިދޭ ގޮތުން 18 ބަނޑު ލިބިދޭ ގޮތުން ބަނޑު ލިބިދޭ ގޮތުން.
- 8.7 ބަނޑު ލިބިދޭ ގޮތުން ބަނޑު ލިބިދޭ ގޮތުން ބަނޑު ލިބިދޭ ގޮތުން ބަނޑު ލިބިދޭ ގޮތުން.
- 8.8 ބަނޑު ލިބިދޭ ގޮތުން ބަނޑު ލިބިދޭ ގޮތުން ބަނޑު ލިބިދޭ ގޮތުން ބަނޑު ލިބިދޭ ގޮތުން.





Motor Watt (W)	300	
Total Suction Head* (m)	8	
Total Discharge Head (m)	20	
Capacity (L/min)	50 (Max.60)	
Pressure Switch (kg/cm ²)	On	2.2
	Off	2.8
Suction Pipe (mm)	25 (1")	
Noise Level (dB)	52	
Discharge Pipe (mm)	25 (1")	
Taps Used Simultaneously** (Average)	6	
Elevation Difference (m)	2	
Dimensions (W×L×H, mm)	384×384×629	
Weight (Net/Gross, kg)	19/21	

NVR SPECIFICATION:

Feature Category	Technical Specification
Video Input	8-Channel IP Video
Throughput	80 Mbps Incoming / 160 Mbps Outgoing Bandwidth
HDMI Output	1-ch, up to 4K (3840 × 2160)/30Hz
Decoding Formats	H.265+ / H.265 / H.264+ / H.264
Decoding Capability	1-ch @ 12MP / 2-ch @ 8MP / 4-ch @ 4MP / 8-ch @ 1080p
Motion Detection 2.0	Human and Vehicle classification on all 8 channels
Perimeter Protection	Up to 2-channel video analysis for human/vehicle recognition
Facial Recognition	1-ch stream recognition or 4-ch face picture comparison
Face Picture Library	Up to 16 libraries (Total 20,000 pictures)
Storage Capacity	2 SATA Interfaces (Up to 10TB per disk)
Built-in PoE	8 RJ-45 10/100 Mbps self-adaptive interfaces
PoE Power Budget	≤ 80 W (Standard: IEEE 802.3 af/at)
Alarm Interface	4 Inputs / 1 Output
USB Interface	1 × USB 2.0 (Front) and 1 × USB 2.0 (Rear)
Power Supply	100 to 240 VAC, 50 to 60 Hz
Chassis	1U (385 mm × 315 mm × 52 mm)

Turret Camera Specifications

Feature Category	Required Technical Specification
Image Sensor	1/1.8" Progressive Scan CMOS
Max. Resolution	2688 × 1520 (4 Megapixel)
Min. Illumination	Color: 0.0005 Lux @ (F1.0, AGC ON); 0 Lux with White Light
Lens Type	Fixed focal lens; 2.8 mm or 4 mm options
Aperture	Constant F1.0 Super Aperture
Illumination Type	Warm White Light (up to 30m range)
Video Compression	H.265+ / H.265 / H.264+ / H.264
WDR	130 dB True Wide Dynamic Range
Intelligent Analytics	Human and Vehicle classification; Line crossing & Intrusion detection
Audio	Built-in Microphone
On-Board Storage	Built-in memory card slot, support microSD/SDHC/SDXC, up to 256 GB
Protection	IP67 Weatherproof
Housing	Turret/Eyeball form factor (Metal/Plastic combination)

Bullet Camera

Feature Category	Required Technical Specification
Image Sensor	1/1.8" Progressive Scan CMOS
Max. Resolution	2688 × 1520 (4 Megapixel)
Min. Illumination	Color: 0.0005 Lux @ (F1.0, AGC ON); 0 Lux with White Light
Lens Type	Fixed focal lens; 2.8 mm or 4 mm options
Aperture	Constant F1.0 Super Aperture
Illumination Type	Warm White Light (up to 40m range)
Video Compression	H.265+ / H.265 / H.264+ / H.264
WDR	130 dB True Wide Dynamic Range
Intelligent Analytics	Human and Vehicle classification; Line crossing & Intrusion detection
Audio	Built-in Microphone
On-Board Storage	Built-in memory card slot, support microSD/SDHC/SDXC, up to 256 GB
Protection	IP67 Weatherproof
Housing	Mini Bullet form factor (Full Metal)

